

MONKEYPOX IGG/IGM TEST KIT (COLLOIDAL GOLD)

What is Monkeypox?

Monkeypox is a disease caused by the monkeypox virus. It is a viral zoonotic disease, meaning that it can spread from animals to humans. It can also spread between people.

Symptoms of monkeypox typically include a fever, intense headache, muscle aches, back pain, low energy, swollen lymph nodes and a skin rash or lesions. The rash usually begins within one to three days of the start of a fever. Lesions can be flat or slightly raised, filled with clear or yellowish fluid, and can then crust, dry up and fall off. The number of lesions on one person can range from a few to several thousand. The rash tends to be concentrated on the face, palms of the hands and soles of the feet. They can also be found on the mouth, genitals, and eyes.

What is MONKEYPOX IGG/IGM TEST KIT ?

The LYHER IgG/IgM test kit for the Monkeypox is a diagnostic test. The test is to be used as an aid in the rapid diagnosis of infection with Monkeypox. The test is used for the direct and qualitative detection of IgG/IgM of Monkeypox in human whole blood, serum, plasma. The rapid test uses highly sensitive antigen to measure the virus infection.

A negative result of the LYHER Monkeypox IgG/IgM Test Kit does not exclude infection with Monkeypox virus. If symptoms are suggestive of Monkeypox, a negative result should be verified by another laboratory test.

SAMPLING METHOD



Plasma



Serum



Blood

TEST PROCEDURE

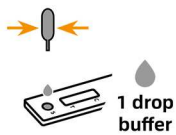


1

Bring the specimen and test components to room temperature if refrigerated or frozen. Once thawed, mix the specimen well prior to performing the assay. When ready to test, Tear open the aluminum bag at the notch and remove the Test Cassette. Place the test Cassette on a clean, flat surface.

Fill the plastic dropper with the specimen. Holding the dropper vertically, dispense 1 drop of serum/plasma (about 30-45 μ L) or 1 drop of whole blood (about 40-50 μ L) into the sample well, making sure there are no air bubbles.

2

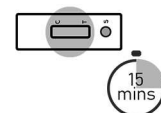


3

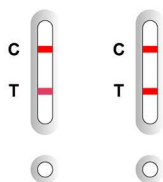
Immediately add 1 drop (about 35-50 μ L) of sample diluent with the buffer tube positioned vertically. Set the timer for 15 MINUTES.

Read the result after 15 MINUTES in sufficient lighting condition. The test result can be read at 15 MINUTES after adding the sample to the test cassette. The result after 20 minutes is invalid.

4



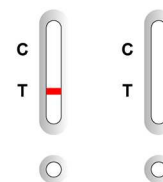
INTERPRETATION



Positive (+)



Negative (-)



Invalid